

TECHNICAL MANUAL

**ORGANIZATIONAL, DIRECT SUPPORT, AND GENERAL
SUPPORT MAINTENANCE REPAIR PARTS AND
SPECIAL TOOLS LISTS**

FOR

**TEST SET RECEIVER
AN/ARM-186**

(NSN 6625-00-557-1168)

This publication is a courtesy quick copy
from the UNITED STATES ARMY
PUBLICATIONS CENTER, ST. ILLINOIS, MISSOURI,
to meet your needs while we are replenish
ing our regular stock.

Technical Manual }
TM 11-6625-2976-24P }

HEADQUARTERS
DEPARTMENT OF THE ARMY
Washington, DC, 26 July 1984

**ORGANIZATIONAL, DIRECT SUPPORT AND GENERAL SUPPORT
MAINTENANCE REPAIR PARTS AND SPECIAL TOOLS LISTS
FOR
TEST SET RECEIVER
AN/ARM-186 (NSN 6625-00-557-1168)**

Current as of 3 April 1984

REPORTING ERRORS AND RECOMMENDING IMPROVEMENTS

You can help improve this manual. If you find any mistakes or if you know of a way to improve the procedures, please let us know. Mail your letter, DA Form 2028 (Recommended Changes to Publications and Blank Forms) or DA Form 2028-2 located in the back of this manual direct to: Commander, US Army Communications-Electronics Command and Fort Monmouth, ATTN: DRSEL-ME-MP, Fort Monmouth, New Jersey 07703. A reply will be furnished direct to you.

TABLE OF CONTENTS

	Page	Illus Figure
Section I. Introduction	1	
II. Repair Parts List	5	
Group 00 Test Set Receiver AN/ARM-186	5	1
01 Electronic Component Assy	9	2
0101 Front Panel Assy	13	3
0102 Marker Beacon Assembly A1 (No Parts Authorized)		
0103 UHF Glidescope Assy A2 (No Parts Authorized)		
0104 VHF Glidescope Assy A3 (No Parts Authorized)		
0105 Localizer Assy A4 (No Parts Authorized)		
0106 VOR Assy A5 (No Parts Authorized)		
0107 Circuit Card Assy A6 (No Parts Authorized)		
02 Battery Charger	17	4
Section III. Special Tools List (Not Applicable)		
IV. National Stock Number and Part Number Index	18	

* This manual supersedes so much of TM 11-6625.2976.148P, 30 January 1981, as pertains to Parts List, Section Vi.

SECTION I

INTRODUCTION

1. Scope

This manual lists spares and repair parts; special tools; special test, measurement, and diagnostic equipment (TMDE), and other special support equipment required for performance of organizational, direct support and general support maintenance of the AN/ARM-186. It authorizes requisitioning and issue of spares and repair parts as indicated by the source and maintenance codes.

2. General

This Repair Parts and Special Tools List is divided into the following sections:

a. Section II. Repair Parts List. A list of spares and repair parts authorized for use in the performance of maintenance. The list also includes parts which must be removed for replacement of the authorized parts. Parts lists are composed of functional groups in numeric sequence, with the parts in each group listed in figure and item number sequence.

b. Section III. Special Tools List. Not applicable.

c. Section IV. National Stock Number and Part Number Index. A list, in National item identification number (NIIN) sequence, of all National stock numbers (NSN) appearing in the listings, followed by a list, in alphameric sequence, of all part numbers appearing in the listings. National stock numbers and part numbers are cross-referenced to each illustration figure and item number appearance.

3. Explanation of Columns

a. Illustration. This column is divided as follows:

(1) *Figure number.* Indicates the figure number of the illustration on which the item is shown.

(2) *Item number.* The number used to identify item called out in the illustration.

b. Source, Maintenance, and Recoverability (SMR) Codes.

(1) *Source code.* Source codes indicate the manner of acquiring support items for maintenance, repair, or overhaul of end items. Source codes are entered in the first and second positions of the Uniform SMR Code format as follows:

<i>Code</i>	<i>Definition</i>
PA	—Item procured and stocked for anticipated or known usage.
XB	—Item is not procured or stocked. If not available through salvage, requisition.

NOTE

Cannibalization or salvage may be used as a source of supply for any items source coded above except those coded XA and aircraft support items as restricted by AR 750-1.

(2) *Maintenance code.* Maintenance codes are assigned to indicate the levels of maintenance authorized to USE and REPAIR support items. The maintenance codes are entered in the third and fourth positions of the Uniform SMR Code format as follows:

(a) The maintenance code entered in the third position will indicate the lowest maintenance level authorized to remove, replace, and use the support item. The maintenance code entered in the third position will indicate one of the following levels of maintenance:

<i>Code</i>	<i>Application/Explanation</i>
O	— Support item is removed, replaced, used at the organizational level.
H	— Support item is removed, replaced, used at the general support level.

(b) The maintenance code entered in the fourth position indicates whether the item is to be repaired and identifies the lowest maintenance level with the capability to perform complete repair (i.e., all authorized maintenance functions). This position will contain one of the following maintenance codes:

<i>Code</i>	<i>Application/Explanation</i>	NOTE
-------------	--------------------------------	-------------

- H — The lowest maintenance level capable of complete repair of the support item is the general support level.
- D — The lowest maintenance level capable of complete repair of the support item is the depot level.
- Z — Nonreparable. No repair is authorized.

When a stock numbered item is requisitioned, the repair part received may have a different part number than the part being replaced.

(3) *Recoverability code.* Recoverability codes are assigned to support items to indicate the disposition action on unserviceable items. The recoverability code is entered in the fifth position of the Uniform SMR Code format as follows:

<i>Recoverability Code</i>	<i>Definition</i>
----------------------------	-------------------

- Z —Nonreparable item. When unserviceable, condemn and dispose at the level indicated in position 3.
- H —Reparable item. When uneconomically reparable, condemn and dispose at the general support level.
- D —Reparable item. When beyond lower level repair capability, return to depot. Condemnation and disposal not authorized below depot level.
- A —Hem requires special handling or condemnation procedures because of specific reasons (i.e., precious metal content, high dollar value, critical material or hazardous material). Refer to appropriate manuals/directives for specific instructions.

c. National Stock Number. Indicates the National stock number assigned to the item and will be used for requisitioning purposes.

d. Federal Supply Code for Manufacturer (FSCM). The FSCM is a 5-digit numeric code listed in SB 708-41/42 which is used to identify the manufacturer, distributor, or Government agency, etc.

e. Part Number. Indicates the primary number used by the manufacturer (individual, company, firm, corporation, or Government activity), which controls the design and characteristics of the item by means of its engineering drawings, specifications, standards, and inspection requirements to identify an item or range of items.

f. Description. Indicates the Federal item name and, if required, a minimum description to identify the item.

g. Unit of Measure (U/M). Indicates the standard of the basic quantity of the listed item as used in performing the actual maintenance function. This measure is expressed by a two-character alphabetical abbreviation (e.g., ea, in, pr, etc). When the unit of measure differs from the unit of issue, the lowest unit of issue that will satisfy the required units of measure will be requisitioned.

h Quantity Incorporated in Unit. Indicates the quantity of the item used in the breakout shown on the illustration figure, which is prepared for a functional group, subfunctional group, or an assembly. A "V" appearing in this column in lieu of a quantity indicates that no specific quantity is applicable, (e.g., shims, spacers, etc).

4. Special Information

a. The following publications pertain to the AN/ARM-186 and its components:

- TM 11-6625-2976-12, Test Set, Receiver, AN/ARM-186
- TM 11-6625-2976-40, Test Set, Receiver, AN/ARM-186

b. National stock numbers (NSN's) that are missing from P source coded items have been applied for and will be added to this TM by future change/revision when they are entered in the Army Master Data File (AMDF). Until the NSN's are established and published, submit exception requisitions to Commander, US Army Communications-Electronics Command, ATTN: DRSEL-MM, Fort Monmouth, NJ 07703 for the part required to support your equipment.

5. How to Locate Repair Parts

a. When National stock number or part number is unknown.

(1) *First.* Using the table of contents, determine the functional group within which the item

belongs. This is necessary since illustrations are prepared for functional groups and listings are divided into the same groups.

(2) *Second.* Find the illustration covering the functional group to which the item belongs.

(3) *Third.* Identify the item on the illustration and note the illustration figure and item number of the item.

(4) *Fourth.* Using the Repair Parts Listing, find the figure and item number noted on the illustration.

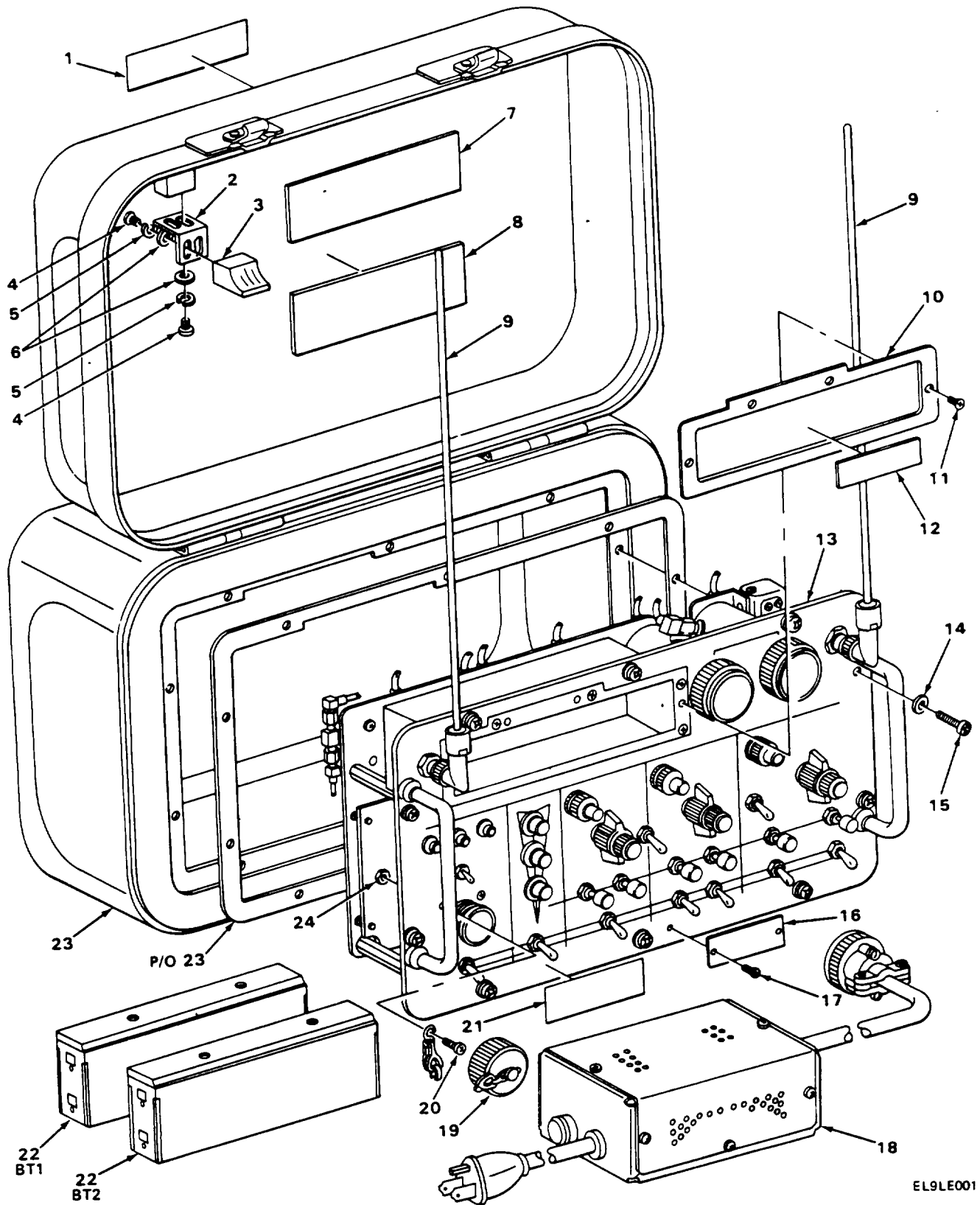
b. When National stock number or part number is known.

(1) *First.* Using the Index of National Stock Numbers and Part Numbers, find the pertinent National stock number or part number. This index is in NIIN sequence followed by a list of part numbers in alphanumeric sequence, cross-referenced to the illustration figure number and item number.

(2) *Second.* After finding the figure and item number, locate the figure and item number in the repair parts list.

6. Abbreviations

Not applicable.



EL9LE001

FIGURE 1. TEST SET RECEIVER AN/ARM-186.

SECTION II REPAIR PARTS LIST		TM11-6625-2976-24P							
(1) ILLUS- TRATION (A) FIG NO	(2) (B) ITEM NO	(3) SMR CODE	(4) NATIONAL STOCK NUMBER	(5) FSCM PART NUMBER	(6) DESCRIPTION	USABLE ON CODE	(7) U\M	(8) QTY INC IN UNIT	
GROUP 00 TEST SET RECEIVER AN/ARM-186									
1	1	XBHZZ		13499 609-7936-002	PLATE,IDENT		EA	1	
1	2	XBOZZ		13499 629-0211-001	BRACKET,WEDGE		EA	1	
1	3	XBOZZ		13499 629-0212-001	ACTUATOR		EA	1	
1	4	PAOZZ	5305-00-054-5648	96906 MS51957-14	SCREW,MACHINE		EA	4	
1	5	PAOZZ	5310-00-933-8118	96906 MS35338-135	WASHER,LOCK		EA	4	
1	6	PAOZZ	5310-00-136-1631	55972 92701040025	WASHER,FLAT		EA	4	
1	7	XBHZZ		13499 634-9781-001	LABEL,CAUTION SAFET		EA	1	
1	8	XBHZZ		13499 634-9780-001	LABEL,BATTERY NOTIC		EA	1	
1	9	PAOZZ	5985-01-040-3503	52177 013-1569-010	ANTENNA		EA	2	
1	10	XBOZZ		13499 629-0729-001	PLATE,BATTERY		EA	1	
1	11	PAOZZ	5305-00-455-2516	96906 MS51959-15B	SCREW,MACHINE		EA	4	
1	12	XBHZZ		13499 629-0542-001	LABEL,WARNING		EA	1	
1	13	XBHDD		13499 629-0200-002	ELEK CMPNT ASSEMBLY (SEE FIGURE 2 FOR BREAKDOWN)		EA	1	
1	14	PAHZZ	5310-01-102-8474	13499 761-5321-043	WASHER,FLAT		EA	10	
1	15	PAHZZ	5305-00-054-6670	96906 MS51957-45	SCREW,MACHINE		EA	10	
1	16	XBHZZ		13499 609-7936-001	PLATE,IDENT		EA	1	
1	17	PAHZZ	5305-00-054-5636	96906 MS51957-2	SCREW,MACHINE		EA	2	
1	18	PAOHH	6130-01-038-4537	13499 629-0230-001	CHARGER,BATTERY (SEE FIGURE 4 FOR BREAKDOWN)		EA	1	
1	19	PAHZZ	5935-00-137-4671	96906 MS25043-16D	COVER,ELECTRICAL CO		EA	1	
1	20	PAHZZ	5305-00-054-5651	96906 MS51957-17	SCREW,MACHINE		EA	4	
1	21	XBHZZ		13499 609-3929-001	LABEL,MODIFICATION		EA	1	
1	22	PAOZZ	6140-01-040-1774	13499 629-0999-001	BATTERY,STORAGE		EA	2	
1	23	XBHZZ		13499 021-0515-010	CASE,TRANSIT		EA	1	
1	24	PAHZZ	5310-00-857-5548	96906 MS21044D04	NUT,SELF-LOCKING,HE		EA	4	

5(6 BLANK)

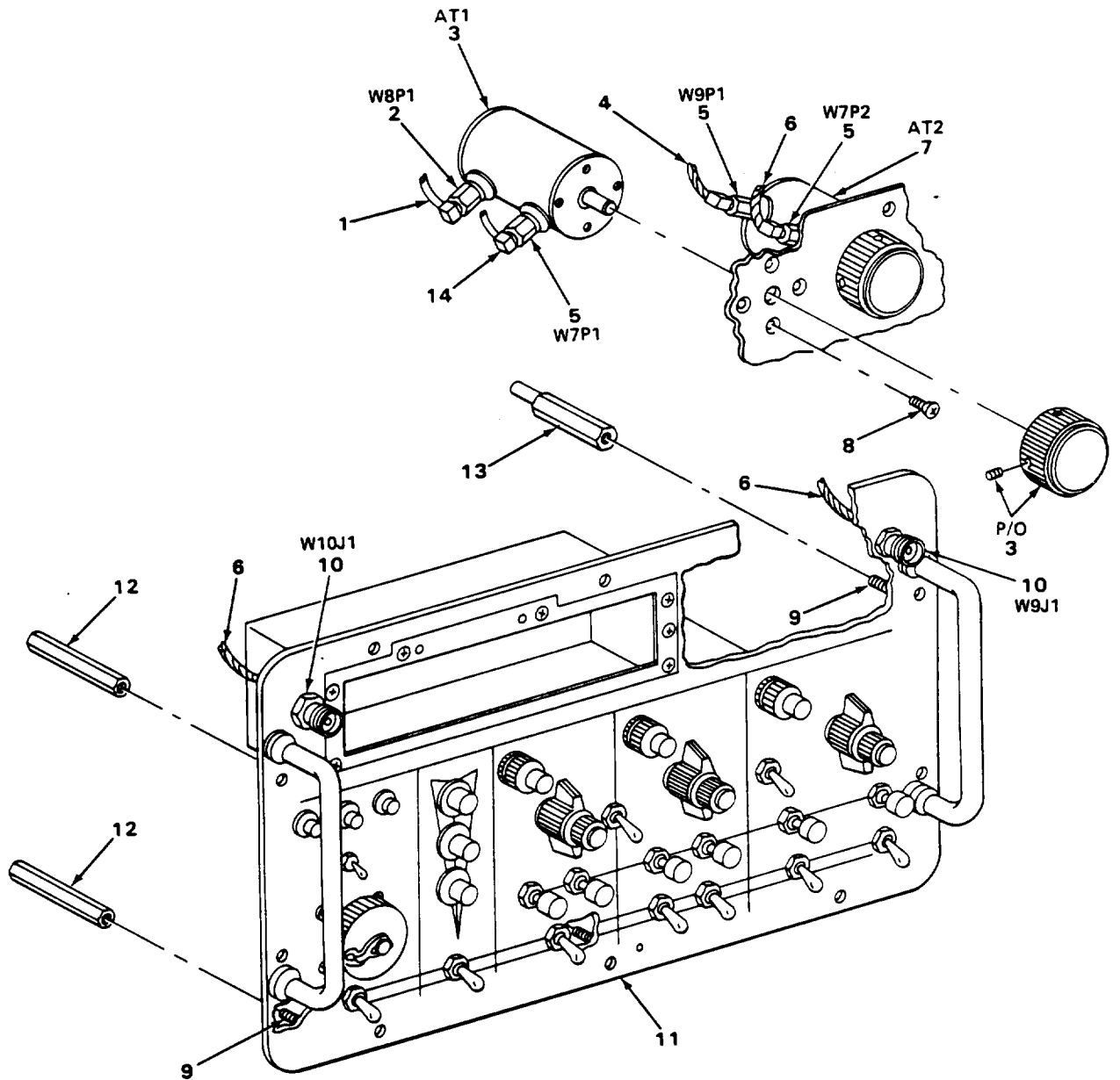
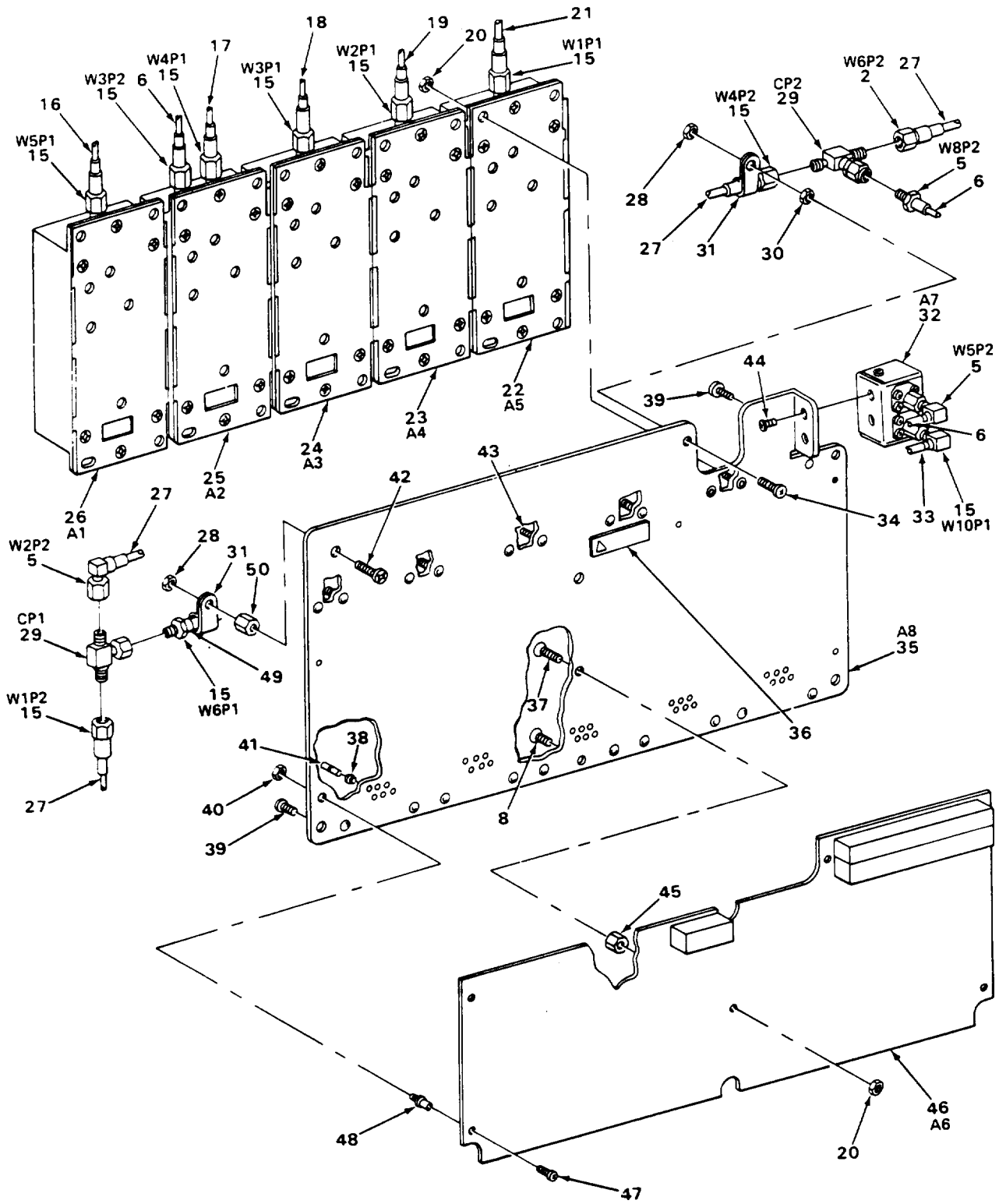


FIGURE 2. ELECTRONIC COMPONENT ASSY (SHEET 1 OF 2).



EL9LE003

FIGURE 2. ELECTRONIC COMPONENT ASSY (SHEET 2 OF 2).

SECTION II (1) ILLUS- TRATION (A) FIG NO		(2) SMR CODE	(3) NATIONAL STOCK NUMBER	TM11-6625-2976-24P (4) (5) FSCM PART NUMBER		(6) DESCRIPTION	USABLE ON CODE	(7) U\M	(8) QTY INC IN UNIT
GROUP 01 ELECTRONIC COMPONENT ASSY									
2	1	XBHZZ		13499	629-0228-008	MARKER, CABLE		EA	1
2	2	PAHZZ	5935-00-179-2011	26805	2032-5004	CONNECTOR, PLUG, ELEC		EA	2
2	3	PAHZZ	5985-01-042-2013	13499	378-0621-010	ATTENUATOR VARIABLE		EA	1
2	4	XBHZZ		13499	629-0228-009	MARKER, CABLE		EA	1
2	5	PAHZZ	5935-00-325-4479	81349	M39012-56-3026	CONNECTOR, PLUG, ELEC OR		EA	5
2	5	XBHZZ		13499	357-7579-010	CONNECTOR, PLUG, ELEC		EA	5
2	6	PAHZZ	6145-00-918-9494	80058	RG-316/U	CABLE, RADIO FREQUEN		FT	V
2	7	PAHZZ	5905-00-520-3968	04423	8122S	ATTENUATOR, VARIABLE		EA	1
2	8	PAHZZ	5305-00-763-6963	96906	MS51959-28	SCREW, MACHINE OR		EA	9
2	8	PAHZZ	5305-00-763-6961	96906	MS51959-26	SCREW, MACHINE		EA	9
2	9	PAHZZ	5305-00-455-2554	96906	MS51959-30B	SCREW, MACHINE		EA	6
2	10	PAOZZ	5935-01-022-9082	81349	M39012/28-0018	CONNECTOR, RECEPTACL		EA	2
2	11	XBHDD		13499	629-0197-002	PANEL ASSEMBLY, FRON (SEE FIGURE 3 FOR BREAKDOWN)		EA	1
2	12	XBHZZ		13499	540-9475-003	POST, SPACING		EA	5
2	13	XBHZZ		26805	629-0727-001	POST, SPACING		EA	1
2	14	XBHZZ		13499	629-0228-007	MARKER, CABLE		EA	1
2	15	XBHZZ		26805	21031-5003-000	CONNECTOR, PLUG ELEC		EA	10
2	16	XBHZZ		13499	629-0228-005	MARKER, CABLE		EA	1
2	17	XBHZZ		13499	629-0228-004	MARKER, CABLE		EA	1
2	18	XBHZZ		13499	629-0228-003	MARKER, CABLE		EA	1
2	19	XBHZZ		13499	629-0228-002	MARKER, CABLE		EA	1
2	20	PAHZZ	5310-00-857-5548	96906	MS21044D04	NUT, SELF-LOCKING HE		EA	22
2	21	XBHZZ		13499	629-0228-001	MARKER, CABLE		EA	1
2	22	PAHDA	5999-01-101-9279	13499	629-0205-001	ELECTRONIC COMPONEN		EA	1
2	23	PAHDA	5999-01-101-9278	13499	629-0204-002	ELECTRONIC COMPONEN		EA	1
2	24	PAHDA	5999-01-101-9281	13499	629-0203-002	ELECTRONIC COMPONEN		EA	1
2	25	PAHDA	5999-01-098-3757	13499	629-0202-001	ELECTRONIC COMPONEN		EA	1
2	26	PAHDA	5999-01-101-9280	13499	629-0201-001	ELECTRONIC COMPONEN		EA	1

SECTION II		TM11-6625-2976-24P						
(1)	(2)	(3)	(4)	(5)	(6)		(7)	(8)
ILLUS- TRATION (A) FIG NO	(B) ITEM NO	SMR CODE	NATIONAL STOCK NUMBER	FSCM	PART NUMBER	DESCRIPTION	USABLE ON CODE	U\M INC IN UNIT
2	27	PAHZZ	6145-00-984-6262	80058	RG-179B/U	CABLE,RADIO FREQUEN		FT V
2	28	PAHZZ	5310-00-857-5547	96906	MS21044D06	NUT,SELF-LOCKING HE		EA 2
2	29	XBHZZ		26805	2084-5044-95	ADAPTER,CONNECTOR		EA 2
2	29	XBHZZ		95077	2041-4017-02	ADAPTER,CONNECTOR		EA 2
2	30	PAHZZ	5310-00-934-9761	96906	MS35649-264	NUT,PLAIN,HEXAGON		EA 1
2	31	XBHZZ		55943	610-0005	CLAMP,LOOP		EA 2
2	32	PAHDA	5805-01-040-3616	13499	629-0700-001	SIGNAL COMBINER ASS		EA 1
2	33	XBHZZ		13499	629-0228-010	MARKER,CABLE		EA 1
2	34	PAHZZ	5305-01-009-7124	96906	MS51957-30	SCREW,MACHINE		EA 1
2	35	XBHZZ		13499	629-0209-001	PLATE,BASE,PRESSED		EA 1
2	36	XBHZZ		12998	280-2745-020	LABEL,PRESS SENSE		EA 1
2	37	PAHZZ	5305-00-768-0336	96906	MS51959-17	SCREW,MACHINE		EA 2
2	38	XBHZZ	5935-01-062-2464	13499	372-2235-012	HOUSING,CONTACT		EA 30
2	39	PAHZZ	5305-00-206-3716	77250	P343-0330-000	SCREW,MACHINE		EA 4
2	40	PAHZZ	5310-00-208-3786	82577	717899-038	NUT,PLAIN,HEXAGON		EA 4
2	41	XBHZZ		13499	372-2602-029	CONTACT,ELECTRIC		EA 30
2	42	PAHZZ	5305-00-054-6655	96906	MS51957-31	SCREW,MACHINE		EA 1
2	43	XBHZZ		46384	FHS440-6	STUD,SELF-CLOSING		EA 20
2	44	PAHZZ	5305-00-770-2533	96906	MS51959-13	SCREW,MACHINE		EA 2
2	45	XBHZZ		13499	540-9031-003	POST,SPACER		EA 2
2	46	XBHDA		13499	629-0206-001	CIRCUIT CARD ASSY		EA 1
2	47	XBHZZ		56878	330-1716-020	SCREW,SELF-LOCKING		EA 4
2	48	XBHZZ		13499	768-3177-041	POST,SPACER		EA 4
2	49	XBHZZ		13499	629-0228-006	MARKER,CABLE		EA 1
2	50	XBHZZ		13499	540-9440-003	POST,SPACER		EA 1

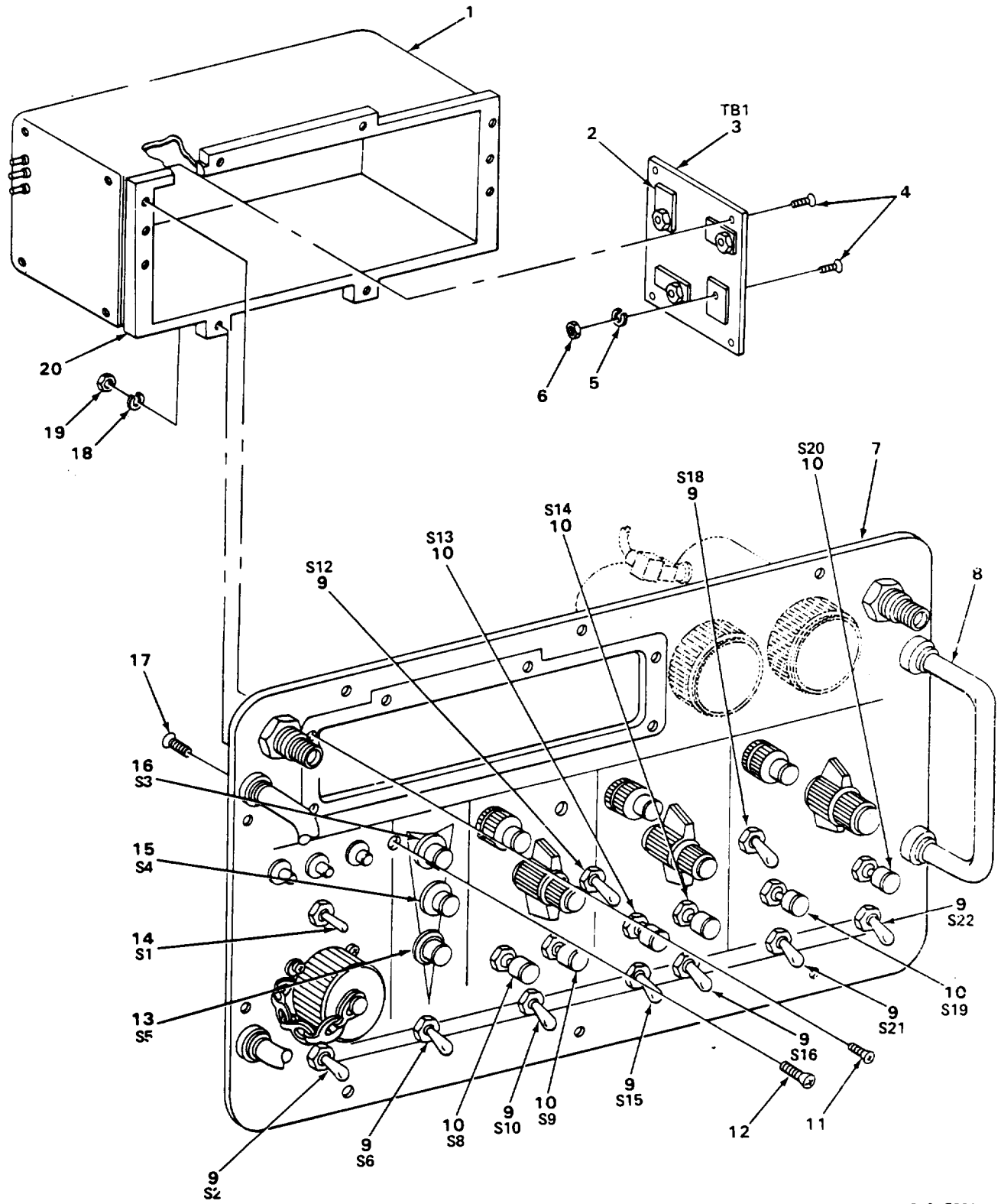


FIGURE 3. FRONT PANEL ASSY (SHEET 1 OF 2).

EL9LE004

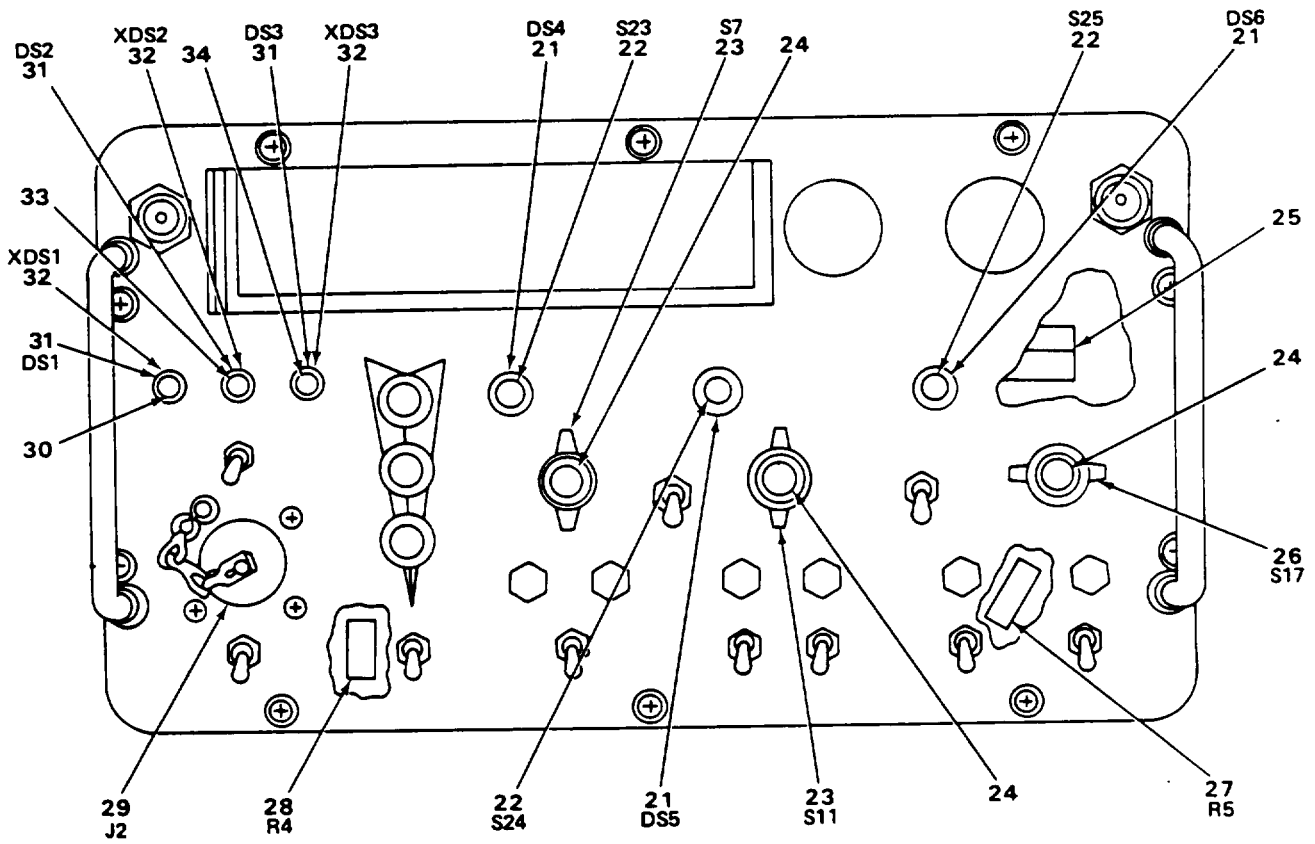
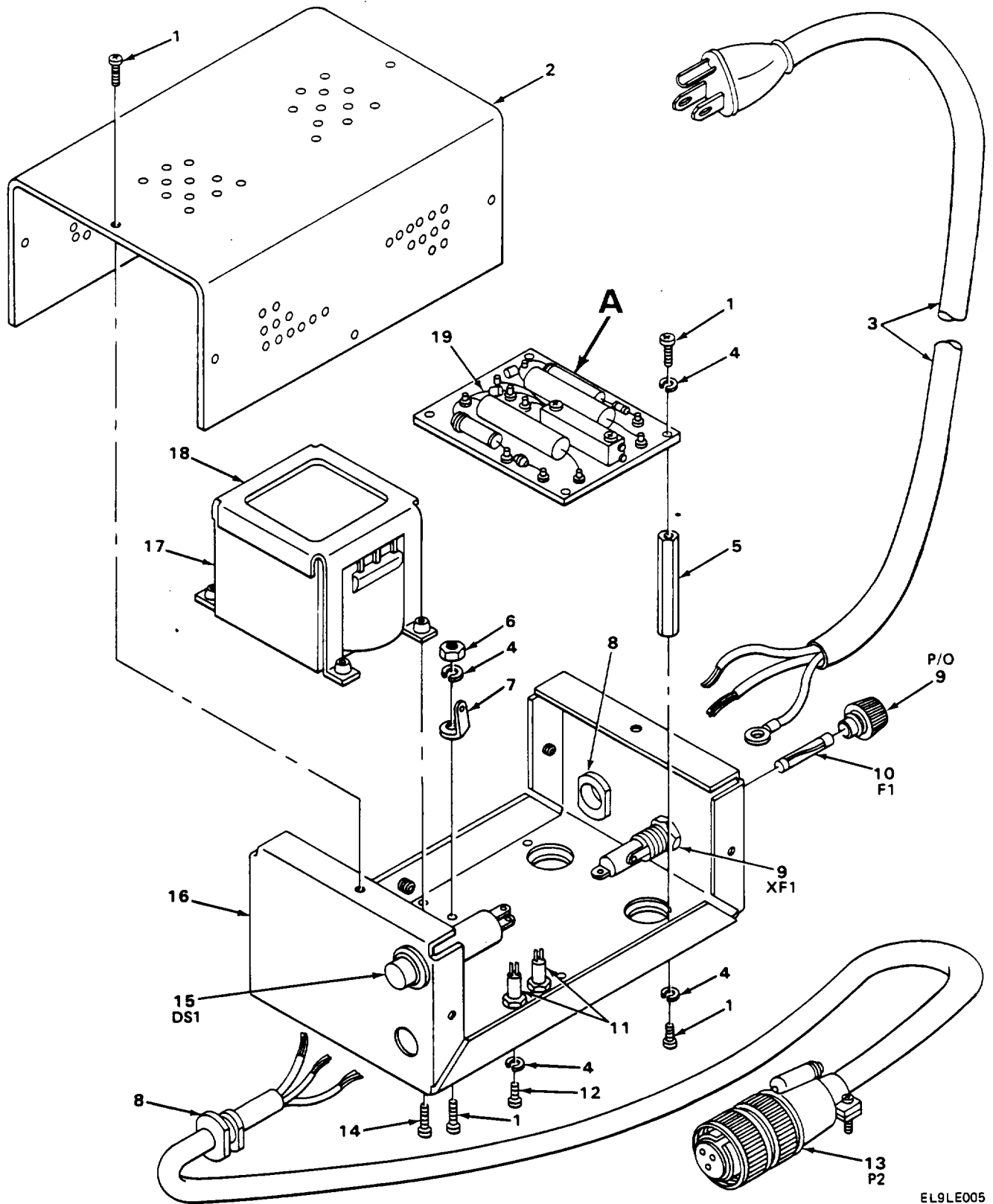


FIGURE 3. FRONT PANEL ASSY (SHEET 2 OF 2).

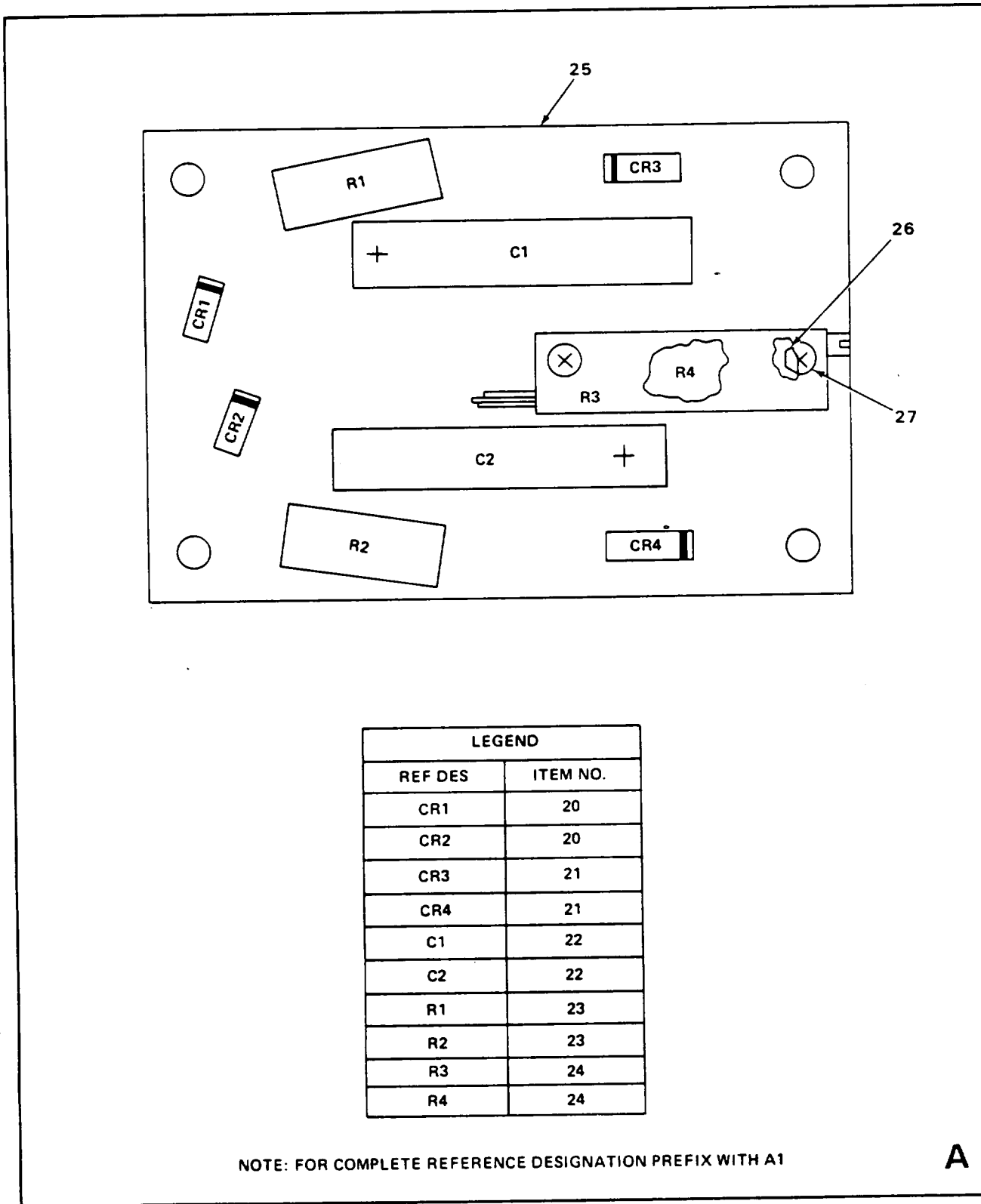
SECTION II (1) ILLUS- TRATION (A) FIG NO	(B) ITEM NO	(2) SMR CODE	(3) NATIONAL STOCK NUMBER	TM11-6625-2976-24P		(6) DESCRIPTION	USABLE ON CODE	(7) U\M	(8) QTY INC IN UNIT
				(4) FSCM	(5) PART NUMBER				
GROUP 0101 FRONT PANEL ASSY									
3	1	XBHZZ		13499	629-0728-001	CASE, BATTERY		EA	1
3	2	XBHZZ		13499	629-0809-001	SPRING, CONTACT		EA	4
3	3	XBHZZ		13499	629-0741-001	CONTACT BOARD		EA	1
3	4	PAHZZ	5305-00-770-2533	96906	MS51959-13	SCREW, MACHINE		EA	8
3	5	PAHZZ	5310-00-058-2949	13499	310-0278-000	WASHER, LOCK		EA	4
3	6	PAHZZ	5310-00-208-3786	82577	717899-038	NUT, PLAIN, HEXAGON		EA	4
3	7	XBHZZ		13499	629-0549-003	PANEL, FRONT		EA	1
3	8	PAHZZ	5340-01-097-8270	05791	7112	HANDLE, BOW		EA	2
3	9	PAHZZ	5930-00-947-8318	96906	MS75029-23	SWITCH, TOGGLE (FOR S2, S6, S10, S15, S16, S21 AND S22)		EA	7
3	9	PAHZZ	5930-01-024-1920	09353	7201SYZQE	SWITCH, TOGGLE (FOR S6, S16 AND S18)		EA	3
3	9	PAHZZ	5930-00-902-2395	96906	MS75028-23	SWITCHES (FOR S12 AND S18)		EA	2
3	9	XBHZZ		09353	7401SYZE	SWITCH, TOGGLE (FOR S2, S10, S12, S15, S21 AND S20)		EA	6
3	10	PAHZZ	5930-01-039-7130	81073	46-150B	SWITCH, PUSH		EA	6
3	11	PAHZZ	5305-00-763-7822	96906	MS51939-14	SCREW, MACHINE		EA	6
3	12	PAHZZ	5305-00-455-2554	96906	MS51959-30B	SCREW, MACHINE		EA	2
3	13	XBHZZ		81073	46-05-05-502-010 1	SWITCH, PUSH		EA	1
3	14	PAHZZ	5930-01-040-7555	09353	7405SYZGE	SWITCH, TOGGLE		EA	1
3	15	XBHZZ		81073	46-05-05-502-060 6	SWITCH, PUSH		EA	1
3	16	XBHZZ		81073	46-05-05-502-050 5	SWITCH, PUSH		EA	1
3	17	PAHZZ	5305-00-071-1322	96906	MS51960-65	SCREW, MACHINE		EA	4
3	18	PAHZZ	5310-00-929-6395	96906	MS35338-136	WASHER, LOCK		EA	2
3	19	PAHZZ	5310-00-616-8660	77250	P313-0045-000	NUT, PLAIN, HEXAGON		EA	2
3	20	XBHZZ		13499	629-0285-001	SPACER, BOARD		EA	2
3	21	PAOZZ	6240-00-763-7744	96906	MS25237-387	LAMP, INCANDESCENT		EA	3
3	21	PAOZZ	6240-00-965-1381	08806	382	LAMP, INCANDESCENT		EA	3
3	22	PAHZZ	5930-00-322-2838	76854	616-8-1	SWITCH, PUSH		EA	3

SECTION II (1) ILLUS- TRATION (A) FIG NO		(2) SMR CODE	(3) NATIONAL STOCK NUMBER	TM11-6625-2976-24P (4) (5) FSCM PART NUMBER		(6) DESCRIPTION	USABLE ON CODE	(7) U\M	(8) QTY INC IN UNIT
3	23	PAHZZ	5930-01-040-8745	11237	SP6325	SWITCH, ROTARY		EA	2
3	24	PAHZZ	5355-01-106-5865	86797	RB67-1B0DCMD	KNOB		EA	3
3	25	XBHZZ		13499	629-0935-001	WIRING, HARNESS		EA	1
3	26	PAHZZ	5930-01-040-1295	11237	SP6280A	SWITCH, ROTARY		EA	1
3	27	XBHZZ		81349	RN55D2491F	RESISTOR, FIXED FILM		EA	1
3	28	PAHZZ	5905-00-432-0381	81349	RN55D1001F	RESISTOR, FIXED, FILM		EA	1
3	29	PAHZZ	5935-00-806-4588	96906	MS3102R16-10P	CONNECTOR, RECEP		EA	1
3	30	PAOZZ	6210-00-780-7945	08717	102264-RL	LENS, INDICATOR		EA	1
3	31	PAOZZ	6240-00-752-2581	96906	MS24515-685	LAMP, INCANDESCENT		EA	3
3	32	PAHZZ	6210-00-117-5134	08717	102SRIH23HI	LIGHT, INDICATOR		EA	3
3	33	PAHZZ	6210-00-780-7944	08717	102264-AL	LENS, INDICATOR LIGH		EA	1
3	34	PAHZZ	6210-00-780-7945	08717	102264-GL	LENS, LIGHT		EA	1



EL9LE005

FIGURE 4. BATTERY CHARGER (SHEET 1 OF 2)



LEGEND	
REF DES	ITEM NO.
CR1	20
CR2	20
CR3	21
CR4	21
C1	22
C2	22
R1	23
R2	23
R3	24
R4	24

NOTE: FOR COMPLETE REFERENCE DESIGNATION PREFIX WITH A1

A

EL9LE006

FIGURE 4. BATTERY CHARGER (SHEET 2 OF 2).

SECTION II (1) ILLUS- TRATION (A) FIG NO		(2) SMR CODE	(3) NATIONAL STOCK NUMBER	TM11-6625-2976-24P (4) (5) FSCM PART NUMBER		(6) DESCRIPTION	USABLE ON CODE	(7) U\M	(8) QTY INC IN UNIT
GROUP 02 BATTERY CHARGER									
4	1	PAHZZ	5305-00-054-5653	96906	MS51957-19	SCREW,MACHINE		EA	17
4	2	XBHZZ		13499	629-0131-001	COVER		EA	1
4	3	PAHZZ	6150-00-405-2172	71700	0220-17	CABLE ASSEMBLY,POWE		EA	1
4	4	PAHZZ	5310-00-933-8118	96906	MS35338-135	WASHER,LOCK		EA	11
4	5	XBHZZ		13499	540-9475-003	POST,SPACING		EA	4
4	6	PAHZZ	5310-00-934-9748	96906	MS35649-244	NUT,PLAIN,HEXAGON		EA	1
4	7	PAHZZ	5940-00-763-1288	79963	403	TERMINAL,LUG		EA	1
4	8	PAHZZ	5975-00-246-4906	28520	SR6P4	BUSHING,STRAIN RELI		EA	2
4	9	XBHZZ		71400	HJMIK0362	FUSEHOLDER		EA	1
4	10	PAOZZ	5920-00-050-4965	75915	362-500	FUSE,CARTRIDGE		EA	1
4	11	XBHZZ		92825	2A1DB15	TERMINAL STANDOFF		EA	2
4	12	PAHZZ	5305-00-054-5646	96906	MS51957-12	SCREW,MACHINE		EA	2
4	13	PAHZZ	5935-00-785-5935	71468	CA3106E16-10S	CONNECTOR,PLUG,ELEC		EA	1
4	14	PAHZZ	5305-00-054-5649	96906	MS51957-15	SCREW,MACHINE		EA	4
4	15	PAOZZ	6210-00-419-0613	95263	32R2115T	LIGHT,INDICATOR		EA	1
4	16	XBHZZ		13499	629-0132-001	CHASSIS,BATTERY CHG		EA	1
4	17	PAHZZ	5950-01-039-7136	13499	629-9110-001	TRANSFORMER,POWER		EA	1
4	18	XBHZZ		13499	634-9183-001	BRACKET,TRANSFORMER		EA	1
4	19	XBHHH		13499	629-0133-001	ELECTRONIC COMPONEN		EA	1
4	20	PAHZZ	5961-00-723-3602	81349	JANIN3612	SEMICONDUCTOR DEVIC		EA	2
4	21	XBHZZ	5961-00-021-6003	81349	JANIN4956	SEMICONDUCTOR DEVIC		EA	2
4	22	PAHZZ	5910-00-007-7183	81349	M39018/01-0636	CAPACITOR,FIXED,ELE		EA	2
4	23	PAHZZ	5905-00-975-1146	81349	RN67V680	RESISTOR,FIXED WIRE		EA	2
4	24	PAHZZ	5905-01-059-5498	81349	RT12C2L100	RESISTOR,VARIABLE,W		EA	2
4	25	XBHZZ		13499	629-0130-001	COMPONENT MTG BOARD		EA	1
4	26	PAHZZ	5310-00-685-3443	72962	68NM26	NUT,SELF-LOCKING,HE		EA	2
4	27	PAHZZ	5305-00-054-5642	96906	MS51957-8	SCREW,MACHINE		EA	2

NATIONAL STOCK NUMBER AND PART NUMBER INDEX

NATIONAL STOCK NUMBER	FIGURE NO	ITEM NO	NATIONAL STOCK NUMBER	FIGURE NO	ITEM NO
5910-00-007-7183	4	22	5905-00-975-1146	4	23
5961-00-021-6003	4	21	6145-00-984-6262	2	27
5920-00-050-4965	4	10	5305-01-009-7124	2	34
5305-00-054-5636	1	17	5935-01-022-9082	2	10
5305-00-054-5642	4	27	5930-01-024-1920	3	9
5305-00-054-5646	4	12	6130-01-038-4537	1	18
5305-00-054-5648	1	4	5930-01-039-7130	3	10
5305-00-054-5649	4	14	5950-01-039-7136	4	17
5305-00-054-5651	1	20	5930-01-040-1295	3	26
5305-00-054-5653	4	1	6140-01-040-1774	1	22
5305-00-054-6655	2	42	5985-01-040-3503	1	9
5305-00-054-6670	1	15	5805-01-040-3616	2	32
5310-00-058-2949	3	5	5930-01-040-7555	3	14
5305-00-071-1322	3	17	5930-01-040-8745	3	23
6210-00-117-5134	3	32	5985-01-042-2013	2	3
5310-00-136-1631	1	6	5905-01-059-5498	4	24
5935-00-137-4671	1	19	5935-01-062-2464	2	38
5935-00-179-2011	2	2	5340-01-097-8270	3	8
5305-00-206-3716	2	39	5999-01-098-3757	2	25
5310-00-208-3786	2	40	5999-01-101-9278	2	23
5310-00-208-3786	3	6	5999-01-101-9279	2	22
5975-00-246-4906	4	8	5999-01-101-9280	2	26
5930-00-322-2838	3	22	5999-01-101-9281	2	24
5935-00-325-4479	2	5	5310-01-102-8474	1	14
6150-00-405-2172	4	3	5355-01-106-5865	3	24
6210-00-419-0613	4	15			
5905-00-432-0381	3	28			
5305-00-455-2516	1	11			
5305-00-455-2554	2	9			
5305-00-455-2554	3	12			
5905-00-520-3968	2	7			
5310-00-616-8660	3	19			
5310-00-685-3443	4	26			
5961-00-723-3602	4	20			
6240-00-752-2581	3	31			
5940-00-763-1288	4	7			
5305-00-763-6961	2	8			
5305-00-763-6963	2	8			
6240-00-763-7744	3	21			
5305-00-763-7822	3	11			
5305-00-768-0336	2	37			
5305-00-770-2533	2	44			
5305-00-770-2533	3	4			
6210-00-780-7944	3	33			
6210-00-780-7945	3	30			
6210-00-780-7945	3	34			
5935-00-785-5935	4	13			
5935-00-806-4588	3	29			
5310-00-857-5547	2	28			
5310-00-857-5548	1	24			
5310-00-857-5548	2	20			
5930-00-902-2395	3	9			
6145-00-918-9494	2	6			
5310-00-929-6395	3	18			
5310-00-933-8118	1	5			
5310-00-933-8118	4	4			
5310-00-934-9748	4	6			
5310-00-934-9761	2	30			
5930-00-947-8318	3	9			
6240-00-965-1381	3	21			

NATIONAL STOCK NUMBER AND PART NUMBER INDEX

FSCM	PART NUMBER	NATIONAL STOCK NUMBER	FIGURE NO	ITEM NO	FSCM	PART NUMBER	NATIONAL STOCK NUMBER	FIGURE NO	ITEM NO
71468	CA3106816-10S	5935-00-785-5935	4	13	08717	102264-RL	6210-00-780-7945	3	30
46384	FHS440-6		2	43	92825	2A1DB15		4	11
71400	HJMLK0362		4	9	26805	2032-5004	5935-00-179-2011	2	2
81349	JANIN3612	5961-00-723-3602	4	20	95077	2041-4017-02		2	29
81349	JANIN4956	5961-00-021-6003	4	21	26805	2084-5044-95		2	29
96906	MS21044D04	5310-00-857-5548	1	24	26805	21031-5003-000		2	15
96906	MS21044D04	5310-00-857-5548	2	20	12998	280-2745-020		2	36
96906	MS21044D06	5310-00-857-5547	2	28	13499	310-0278-000	5310-00-058-2949	3	5
96906	MS24515-685	6240-00-752-2581	3	31	95263	32R2115T	6210-00-419-0613	4	15
96906	MS25043-16D	5935-00-137-4671	1	19	56878	330-1716-020		2	47
96906	MS25237-387	6240-00-763-7744	3	21	13499	357-7579-010		2	5
96906	MS3102R16-10P	5935-00-806-4588	3	29	75915	362-500	5920-00-050-4965	4	10
96906	MS35338-135	5310-00-933-8118	1	5	13499	372-2235-012	5935-01-062-2464	2	38
96906	MS35338-135	5310-00-933-8118	4	4	13499	372-2602-029		2	41
96906	MS35338-136	5310-00-929-6395	3	18	13499	378-0621-010	5985-01-042-2013	2	3
96906	MS35649-244	5310-00-934-9748	4	6	08806	382	6240-00-965-1381	3	21
96906	MS35649-264	5310-00-934-9761	2	30	79963	403	5940-00-763-1288	4	7
96906	MS51939-14	5305-00-763-7822	3	11	81073	46-05-05-502-010		3	13
96906	MS51957-12	5305-00-054-5646	4	12	1				
96906	MS51957-14	5305-00-054-5648	1	4	81073	46-05-05-502-050		3	16
96906	MS51957-15	5305-00-054-5649	4	14	5				
96906	MS51957-17	5305-00-054-5651	1	20	81073	46-05-05-502-060		3	15
96906	MS51957-19	5305-00-054-5653	4	1	6				
96906	MS51957-2	5305-00-054-5636	1	17	81073	46-150B	5930-01-039-7130	3	10
96906	MS51957-30	5305-01-009-7124	2	34	13499	540-9031-003		2	45
96906	MS51957-31	5305-00-054-6655	2	42	13499	540-9440-003		2	50
96906	MS51957-45	5305-00-054-6670	1	15	13499	540-9475-003		2	12
96906	MS51957-8	5305-00-054-5642	4	27	13499	540-9475-003		4	5
96906	MS51959-13	5305-00-770-2533	2	44	13499	609-3929-001		1	21
96906	MS51959-13	5305-00-770-2533	3	4	13499	609-7936-001		1	16
96906	MS51959-15B	5305-00-455-2516	1	11	13499	609-7936-002		1	1
96906	MS51959-17	5305-00-768-0336	2	37	55943	610-0005	5930-00-322-2838	2	31
96906	MS51959-26	5305-00-763-6961	2	8	76854	616-8-1		3	22
96906	MS51959-28	5305-00-763-6963	2	8	13499	629-0130-001		4	25
96906	MS51959-30B	5305-00-455-2554	2	9	13499	629-0131-001		4	2
96906	MS51959-30B	5305-00-455-2554	3	12	13499	629-0132-001		4	16
96906	MS51960-65	5305-00-071-1322	3	17	13499	629-0133-001		4	19
96906	MS75028-23	5930-00-902-2395	3	9	13499	629-0197-002		2	11
96906	MS75029-23	5930-00-947-8318	3	9	13499	629-0200-002		1	13
81349	M39012-56-3026	5935-00-325-4479	2	5	13499	629-0201-001	5999-01-101-9280	2	26
81349	M39012/28-0018	5935-01-022-9082	2	10	13499	629-0202-001	5999-01-098-3757	2	25
81349	M39018/01-0636	5910-00-007-7183	4	22	13499	629-0203-002	5999-01-101-9281	2	24
77250	P313-0045-000	5310-00-616-8660	3	19	13499	629-0204-002	5999-01-101-9278	2	23
77250	P343-0330-000	5305-00-206-3716	2	39	13499	629-0205-001	5999-01-101-9279	2	22
86797	RB67-18UDCMD	5355-01-106-5865	3	24	13499	629-0206-001		2	46
80058	RG-179B/U	6145-00-984-6262	2	27	13499	629-0209-001		2	35
80058	RG-316/U	6145-00-918-9494	2	6	13499	629-0211-001		1	2
81349	RN55D1001F	5905-00-432-0381	3	28	13499	629-0212-001		1	3
81349	RN55D2491F		3	27	13499	629-0228-001		2	21
81349	RN67V680	5905-00-975-1146	4	23	13499	629-0228-002		2	19
81349	RTL2C2L100	5905-01-059-5498	4	24	13499	629-0228-003		2	18
11237	SP6280A	5930-01-040-1295	3	26	13499	629-0228-004		2	17
11237	SP6325	5930-01-040-8745	3	23	13499	629-0228-005		2	16
28520	SR6P4	5975-00-246-4906	4	8	13499	629-0228-006		2	49
52177	013-1569-010	5985-01-040-3503	1	9	13499	629-0228-007		2	14
13499	021-0515-010		1	23	13499	629-0228-008		2	1
71700	0220-17	6150-00-405-2172	4	3	13499	629-0228-009		2	4
08717	102SRIH23HI	6210-00-117-5134	3	32	13499	629-0228-010		2	33
08717	102264-AL	6210-00-780-7944	3	33	13499	629-0230-001	6130-01-038-4537	1	18
08717	102264-GL	6210-00-780-7945	3	34	13499	629-0285-001		3	20

NATIONAL STOCK NUMBER AND PART NUMBER INDEX

FSCM	PART NUMBER	NATIONAL STOCK NUMBER	FIGURE NO.	ITEM NO.
13499	629-0542-001		1	12
13499	629-0549-003		3	7
13499	629-0700-001	5805-01-040-3616	2	32
26805	629-0727-001		2	13
13499	629-0728-001		3	1
13499	629-0729-001		1	10
13499	629-0741-001		3	3
13499	629-0809-001		3	2
13499	629-0935-001		3	25
13499	629-0999-001	6140-01-040-1774	1	22
13499	629-9110-001	5950-01-039-7136	4	17
13499	634-9183-001		4	18
13499	634-9780-001		1	8
13499	634-9781-001		1	7
72962	68NM26	5310-00-685-3443	4	26
05791	7112	5340-01-097-8270	3	8
82577	717899-038	5310-00-208-3786	2	40
82577	717899-038	5310-00-208-3786	3	6
09353	7201SYZQE	5930-01-024-1920	3	9
09353	7401SYZE		3	9
09353	7405SYZGE	5930-01-040-7555	3	14
13499	761-5321-043	5310-01-102-8474	1	14
13499	768-3177-041		2	48
04423	8122S	5905-00-520-3968	2	7
55972	92701040025	5310-00-136-1631	1	6

By Order of the Secretary of the Army:

Official:

JOHN A. WICKHAM JR.
General, United States Army
Chief of Staff

ROBERT M. JOYCE
Major General, United States Army
The Adjutant General

Distribution:

To be distributed in accordance with special list.

RECOMMENDED CHANGES TO EQUIPMENT TECHNICAL PUBLICATIONS



THEN... JOT DOWN THE DOPE ABOUT IT ON THIS FORM. CAREFULLY TEAR IT OUT. FOLD IT AND DROP IT IN THE MAIL!

SOMETHING WRONG WITH THIS PUBLICATION

FROM: (PRINT YOUR UNIT'S COMPLETE ADDRESS)

DATE SENT

PUBLICATION NUMBER TM 11-6625-2976-24P	PUBLICATION DATE 26 July 1984	PUBLICATION TITLE Test Set Receiver AN/ARM-186
---	----------------------------------	---

BE EXACT . . . PIN-POINT WHERE IT IS

PAGE NO	PARA-GRAPH	FIGURE NO	TABLE NO

IN THIS SPACE TELL WHAT IS WRONG AND WHAT SHOULD BE DONE ABOUT IT:

(This area is currently blank for user input.)

PRINTED NAME, GRADE OR TITLE, AND TELEPHONE NUMBER

SIGN HERE

FILL IN YOUR
UNIT'S ADDRESS

FOLD BACK

DEPARTMENT OF THE ARMY

POSTAGE AND FEES PAID
DEPARTMENT OF THE ARMY
DOD 314



TEAR ALONG PERFORATED LINE

OFFICIAL BUSINESS
PENALTY FOR PRIVATE USE \$300

Commander
US Army Communications-Electronics
Command and Fort Monmouth
ATTN: DRSEL-ME-MP
Fort Monmouth, N.J. 07703

